

# The Daisy Chain

Volume 32 Issue 2

June 2022



A black and white line drawing of a girl whose head is a large flower with many petals. She has a face with closed eyes and a small mouth, and is wearing a simple dress.

terrybukowski@yahoo.com  
gkittoco@adelphia.net  
 sandilee43@roadrunner.com  
 suemunsell@aol.com  
 contrary128@gmail.com  
 http://www.terrileedolls.com

In the box at the upper left called Subscriber Password type Daisy Chain 2022 **(You must capitalize the( D & C) our password is case sensitive)** Click on Login. Then click on the second box on the left in the upper menu, the box which says Current Issue. Scroll down to see the article and double click to enlarge the page. Click on download to print in color. **This will be our password for the year to make it easier for you to remember.**

**Glenda Kitto has a web page with clothes and dolls for sale visit [terrilee.net](http://terrilee.net)**

[illegible]

**The Daisy Chain magazine and Little Mothers Talk is for personal use only and may not be sold in any form. Furthermore, all pictures and articles published are solely the property of the Daisy Chain and cannot be reproduced or sold without permission. © 2022 The Daisy Chain**

**Articles for the Sep  
2022 issue are due  
Aug, 2022**

©2022 The Daisy Chain

# Spring Coats ~ 1952

Terry Bukowski



Springtime for Terri and Jerri Lee means a page devoted to their Spring Coat and Hat for Terri and a Beannie for Jerri. The fabric is a soft wool that came in several solid colors. The inside of the coat is lined and will fit over the organdy or taffeta dress that the Fashion Parade says she wears underneath. Terri's coat has a white pique collar that snaps on the coat. Both Terri and Jerri have six buttons sewn on the coats, however the coats actually have a snap closure. The coats come with a felt hat, Terri's hat is very unusual in that it is sewn in two pieces, a round circle sewn to a band with a dart at the back. A felt flower with leaves trim the hat on the left side. The hat comes with a matching purse with the same flower applique. While Jerri's beannie is like the brownie beannie. The coat set is featured in the February Monthly Magazine with a coloring page.



I want to highlight some of the pretty colors that the coat came in.



# Spring Coats ~ 1952

Terry Bukowski



These coats are mint in box, you can see the shape of the hat, notice the felt flowers match the coat on both the hat and the purse.

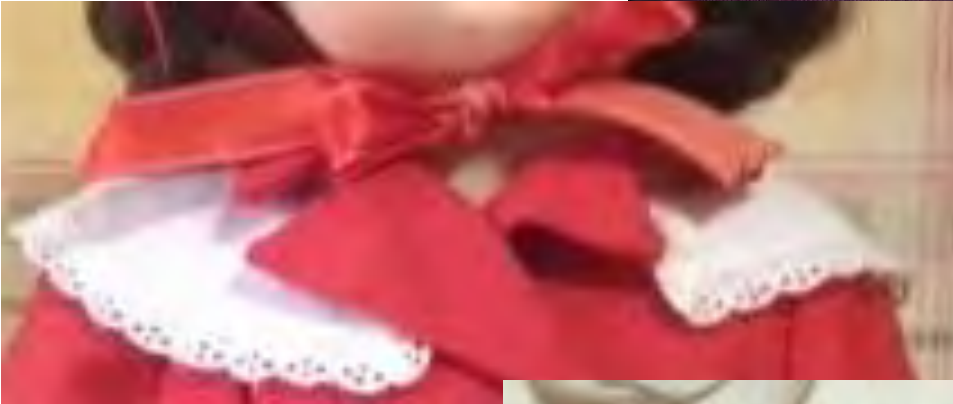
Also note the two buttons sewn on the back of the coat.



# Spring Coats ~ 1952

Terry Bukowski

Another interesting item is the collars. The trim on the collars varied I'm sure the sewers used what was available. The bottom collars seem to be on more coats than the top two



# Felt Spring Coat Beret

Terry Bukowski

The 1952 Fashion Parade offers a lightweight wool coat which comes with a felt hat and matching purse. The hat is constructed as a beret and when positioned on Terri's head will fold over. This is the only outfit I have seen this hat with.

The hat is constructed of two pieces of felt a circle and a second piece that is 1 ½ " wide in front widening to 2" in the back with a V. There is a seam that sews the lower half together and it continues ¼" up the circle.



590C Terri in Spring Coat and Hat 1560J Jerri in Spring Suit and Beanie

## SPRINGTIME

Mother made us some new spring coats. They are just right for those "in-between days," when it's neither hot nor cold. The material is a warm, soft wool with white pique collars and white buttons. Our hats are of felt, and I have a matching felt purse to wear with this costume. Underneath I wear a crisp organdy or taffeta dress.

3590C Spring Hat, Coat, and Purse 3560J Spring Suit, Shirt, and Beanie



# Spring Coats ~ 1953 - 1956

Terry Bukowski



The 1953 gives us a hit of what is new for the Spring Coat that will be in the 1954 Fashion Parade. The coat is made of a lightweight houndstooth wool. The design of the coat is identical to the solid Spring Coats of 1952 with the wonderful detachable pique collar and the six buttons that go down the front of the coat, concealing the snap closures. Notice the hat Terri is pictured in is straw, however the bowler hat makes it on the pages of the Fashion Parade.

Jerri is also pictured in the 1954 Fashion

Parade wearing his Spring Coat. His hat is very hard to see and along with the detachable collar are usually missing. My best guess is the hat is the same style as the brownie beannie.



590C Terri in Spring Coat and Hat with Purse 19.95      1560J Jerri in Spring Suit 16.95      540X Terri in Duster and Pony Tail Hat 14.95

## SPRINGTIME

Springtime! The flowers are so bright and lovely after their winter's nap! And Jerri and I love the warm golden sun and the fresh new green on the trees and grass, don't you? We like to take walks wearing our beautiful spring outfits. Here I am in my spring coat with the white under-collar and white felt purse, and Jerri in his matching spring suit. Our hats are felt, too, and so spring-time-ish! I'm wearing my tuffeta duster on the other side of Jerri, with the peaked "pony-tail" hat. Isn't it cute? I can wear my duster all spring and summer.

3590C Spring Coat with hat and purse, silk lining in coat 6.50      4560J Spring Suit—Coat, Pants and Hat, silk lined coat 5.95      3540X Tuffeta Duster and Pony-Tail Hat 1.50

7



## SPRINGTIME

Springtime! The flowers are so bright and lovely after their winter's nap. Jerri and I love the warm golden sun and the fresh new green on the trees and grass, don't you? We like to take walks wearing our beautiful spring outfits. Here I am in my spring coat and new spring hat trimmed with flowers, and Jerri is next to me in his Wool Suit and Cap looking proud as Punch. There he is again on the right in his checked Top Coat and matching Hat that he wears when the spring sun isn't quite as warm as we thought it would be.

1858 Spring Coat, lined, with Straw Hat 5.95      2861 Wool Suit and Cap 5.95      2862 Top Coat with matching Hat 5.95

8

The coats come in a variety of colors and their pictures are on the following pages. In 1956 the hat for Terri that is available is what I call Terri's Easter bonnet and purse.

Sandy Dorsey's hat article "Straw Hats" follows this article and has information on all straw hats. In the 1956 Fashion Parade Jerri is now wearing what is called a wool suit and cap which doesn't match Terri's spring coat. And did you notice Terri's detachable collar is missing from the 1956

Fashion Parade?

# Spring Coats ~ 1953 - 1956

Terry Bukowski



Here is a better picture of Terri with her Easter hat and purse

The detachable collar is also missing from this picture for Terri. The cap for Jerri in this picture looks to be the baseball cap with the brim.

The coloring page is from The Monthly Magazine April 1956. No collar on this picture either.



# Spring Coats ~ 1953 - 1956

Terry Bukowski



The collars that are on my coats from this era have different lace than the ones from 1952, which was based on what was available at the time.



# Felt Bowler Hat

Terry Bukowski



A felt Bretton bowler hat accents Terri Lee's dresses and spring coat. The hats come in a variety of colors and are decorated with flowers and ribbons.

1952 price lists the matching felt hat and purse for \$1.25.

Terri's bowler hats were made by different manufactures. Below are two marks found in bowler hats owned by Pat Rather.



MOHN BROTHERS CO  
USA BERKSHIRE

94% WOOL 6% CASLIN FIBER



To the right is 94% WOOL 6%  
ARAKAR QUALIFELT

MADE IN USA

SLOCUM STRAW WORKS

OMIL-WAYKEE, WIS



Tiny Terri Lee's hat above

# “Straw” Hats

By YoursTerriLee



When Vi Gradwohl launched her delightful doll business immediately after World War II in the late 1940's she used predominately natural fabrics and materials. Terri Lee's straw hats were all natural straw during these years. But in the 1950's a number of synthetic fabrics and materials became available and so Terri Lee's straw hats became “straw” hats. In other words most of her new bonnets were made of nylon that looks like straw and this made them a lot more durable and easier to play with. The big change seems to have occurred in 1954, as verified in the monthly booklets and especially in the 1954 Fashion Parade. This particular Fashion Parade is disappointing because the pictures are black and white but it is outstanding in the number of new costumes and new hats offered. Every doll on the first page of pictures is wearing a hat and four out of five of the dolls on the next two pages are wearing hats. Violet and her daughter have gone chapeau silly!

On page 8 of the 1954 Fashion Parade and on the front cover of the April 1954 Monthly booklet Terri Lee appears in Organdy Party Dress and Hat. The hat is described as a “lovely picture hat.” On close examination this author believes the hat may be of twisted raffia or some other natural fabric but it is not straw. This hat measures 7 inches across and has a circular brim trimmed

around the edge with satin ribbon. The crown is not as high as previous straw hats and it is also trimmed with a satin ribbon all the way around which ties in the back in a bow. A small bunch of flowers adorns the front. A small elastic band reaches under Terri's chin to hold the hat on.



Terri Lee's Picture Hat 1954

Terri Lee's new Walker is introduced on page 35 of the 1954 Fashion Parade along with a new Easter bonnet and purse. This hat is made of a nylon-like synthetic material with a wire frame. It consists of two layers of nylon thread and raffia and it is trimmed with quarter inch velveteen ribbon. The shape is suggestive of a visor rather than a full hat and it has no back to it.



This is the only hat that I have found to be tagged Terri Lee. It comes with a matching purse made of the same material and trimmed in quarter inch velveteen ribbon also. The purse is about 4 inches long. The hat is about 6 inches wide and 3 ½ inches deep.



Easter Bonnet and Purse

1954





Featured on the front cover of August 1954 Monthly Booklet is Violet Gradwohl's granddaughter the "real" Linda and her Terri Lee doll and walker. Both Linda and Terri Lee are showing off their new handmade "straw" hats and purses. These are indeed very special hats and the most sought after and probably the most expensive Terri Lee hat in existence. These wonderful accessories were made by Ruth Miller in Omaha Nebraska.

Terri Lee's hat is rather large, six inches across and circular. It stands 3 ½ inches tall at the crown and it is made of synthetic material which resembles straw. It is trimmed with a baby chick, a small bow of velveteen ribbon, daisies and rhinestones. The ribbon tie under Terri's chin is 5/8 inch white grosgrain ribbon. The hat has a special label to identify it as being



handmade by Ruth Miller.

All rights reserved. Do not copy or sell copies of this article without the permission of the author. Sandy Dorsey 2009

Handmade "Straw" hat



By Ruth Miller 1954



# Hats Off to Vi

By YoursTerriLee



As Vi Gradwohl and her daughter Terri Lee designed a fabulous wardrobe for their beautiful doll they included headpieces and hats for many of the costumes. The hats and headwear are as magnificent as the outfits themselves and are also made from the best materials and trimmed with flowers, ribbons, and feathers. Besides hats that were made to accessorize special outfits one could order for this fashionable doll a majorette hat, drum major hat, sombreros, straw hat, felt hat and purse, straw bonnet, and a handmade straw hat and purse. This information comes from a merchants order blank that belongs to Glenda Kitto.. YoursTerriLee will be writing a series of articles for the Daisy Chain Newsletter about Terri Lee hats. Known facts and maybe a bit of speculation will be included but it will be impossible to cover every single hat that was made for Terri Lee so feel free to contact me with additional information and pictures so that the hat catalogue can be updated. Please save

this series of articles and add it to the series that Pat Rather and Terry Bukowski did some years ago for the Accessories Book.

## Straw Hats

Terri Lee and Jerri Lee appear on page 18 of a Lincoln Nebraska Fashion Parade wearing their perky straw hats with their pique suits. These are Easter Outfits and certainly everyone living in the early 1950's wore a new hat for Easter. Terri's hat is trimmed in flowers and ties with satin ribbon and Jerri's hat is unadorned. The hats are finely woven natural straw and have a high crown. The picture at the right shows some different weaving of the straw used on Terri Lee hats. The hats measures about 6 ¼ to 6 3/8 inches



across the brim and about 2 inches deep at the crown. Assorted flowers are used for the embellishments and standard single sided satin rayon ribbons in various colors are used on the ties.



The same hat is used for Jerri Lee in his calypso outfit. This straw hat appears in Apple Valley Fashion Parades of 1952 and 1954 with the pique suits for Terri Lee and Jerri Lee and on Jerri Lee in Summer suit in 1954 and Calypso Outfit in 1952.

Below is shown the difference in a Terri Lee hat and a NON Terri Lee hat. Notice the NON Terri Lee hat has a much smaller crown although the brim is approximately the same diameter size.



On the left is the real Terri Lee hat and on the right is the NON Terri Lee hat.



Some hats have been found with matching straw purses but there are no references to a matching straw purse with Terri Lees hat in any of the literature. . This author would suppose that department stores must have added purses to go with the hats.

Irish Colleen Outfit in 1954 and Irish Party Dress Outfit in 1956 included a natural straw hat adorned with a daisy and tied with black ribbons.

All rights reserved. Do not copy or sell copies of this article without permission from the author. Sandy Dorsey 2009





The Irish Colleen costume featured in the 1952 Apple Valley Fashion Parade and the March 1953 Monthly booklet includes a natural straw hat that is very different. It is doughnut shaped and has an open crown. The ribbon ties are black and the hat has a daisy on the front. The ribbon wraps around the brim of the hat.



Another type of natural straw Terri Lee "bonnet" is shown with Terri Lee's checked

Summer Suit in the 1954 Fashion Parade and on the cover of the April 1953 Monthly booklet. This hat has a bowl shaped crown and ribbon and flowers across the front of the brim.





Terri'Lee's straw bonnet measures 5 inches across and 5 ½ inches from front to back. Single sided satin ribbon with a small bunch of flowers is stapled at the front and the ribbon is also

stapled on each side at the back. The ribbon is short when tied under Terri's chin. Ribbons and flowers come in various colors.

Terri Lee and her straw bonnet are featured on page 9 of the June 1953 Monthly booklet in her "New School Outfit."



Terri Lee in her houndstooth Spring coat is shown on page 2 of the February 1954 Monthly Booklet with natural straw bonnet style hat. Jerri Lee is featured in the same Monthly booklet with houndstooth Spring Suit and natural straw hat.

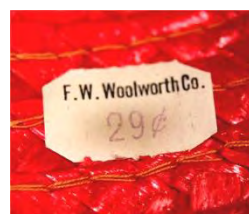


## A NON TERRI LEE

**HAT** This hat is constructed exactly like and is the same size as Terri Lee's straw bonnet but it is NOT an authentic Terri Lee hat. The ribbon is a more inexpensive rayon and does



not include ties but is cut off at the rim. The flowers are different and best of all it is marked F. W. WOOLWORTH CO. 29 Cents



# Little Mother Sews a New Collar for Terri Lees' Spring Coat

By

Mary M. Hayden

**T**here are so many elusive Terri Lee accessories and each one is very important to a Terri Lee collector. Here is a pattern for a new detachable collar for Terri Lees' adorable Spring Coat. The collar is made from white pique fabric and trimmed with vintage Val lace.

Your Spring Coat will probably have half of the snap set already there. The problem-- they do not make that size snap today, so you might have to replace them, or you might be really lucky to have some originals to use, what about that dress that is torn and you might not want to display it, you could use those snaps?

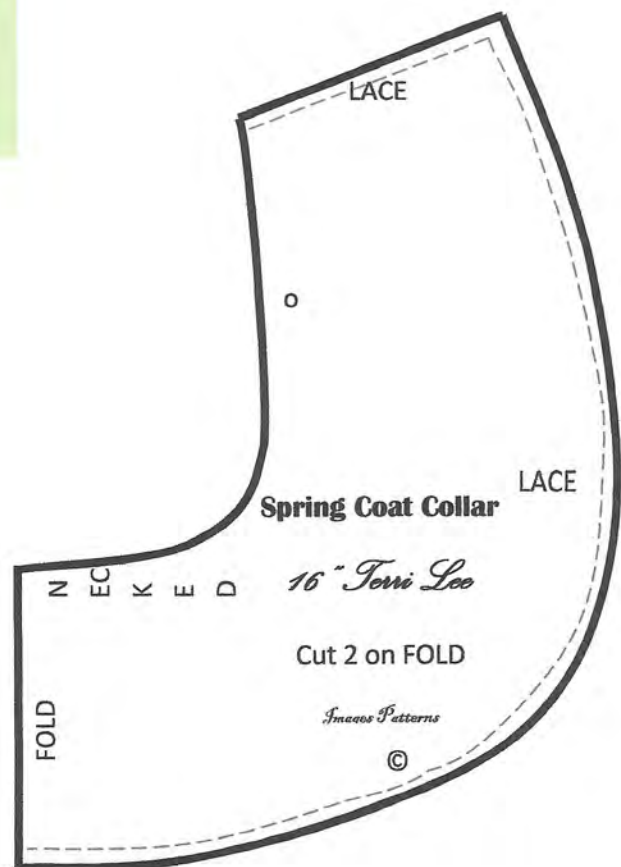


## MATERIALS

- Piece of white pique fabric, 7" x 10"
- 8 inches of white bias tape
- Small sew-on snaps
- Thread to match your fabric
- 1 yard ½" lace trim

## INSTRUCTIONS

1. Lay the two pattern pieces on top of each other.
2. Stitch lace around outside edge of both layers. (Broken line)
3. Sew binding around the neck edge.
4. Sew snaps at the (o) on inside of the neck edge. (Be sure to check the snap position on the coat before sewing the snap on the collar, they might be a bit different depending on the coat style.)



# Duster Coat with Pony~Tail Hat

Terry Bukowski

1954 Springtime is the theme for introducing Terri's duster and pony~tail hat. At a cost of \$1.50 it is a fun coat and hat. The duster is advertised made of taffeta and can be worn spring and summer. The fabric shown in the 1954 Fashion Parade is striped. The earlier versions has a snap closure. Two types of closure were used the normal snap and the white snap version. The duster is straight with a seam in the back.



590C Terri in Spring Coat and Hat with Puree 19.95      1540J Jerri in Spring Suit 18.95      540X Terri in Duster and Pony Tail Hat 14.95

**SPRINGTIME**

Springtime! The flowers are so bright and lovely after their winter's nap! And Jerri and I love the warm golden sun and the fresh new green on the trees and grass, don't you? We like to take walks wearing our beautiful spring outfits. Here I am in my spring coat with the white under-collar and white felt purse, and Jerri in his matching spring suit. Our hats are felt, too, and so spring-time-ful! I'm wearing my taffeta duster on the other side of Jerri, with the peaked "pony-tail" hat. Isn't it cute? I can wear my duster all spring and summer.

3590C Spring Coat with hat and purse, silk lining in coat 6.50      4540J Spring Suit—Coat, Pants and Hat, silk lined coat 5.95      3540X Taffeta Duster and Pony-Tail Hat 1.50

7



Very interesting combination is the black coat with the black and white hat.

# Duster Coat with Pony~Tail Hat

Terry Bukowski

The May 1955 Monthly Magazine and the 1956 Fashion Parade show a new version of the duster and pony tail hat. The coat has a bodice with a full skirt. There are three buttons down the bodice which comes with either button holes or snap clousers, there is also a snap closure at the bottom of the skirt. While some dusters are still made of taffets the coats also come in a lightweight cotton.



The ponytail hat as a stay in the front, which keeps it tight on Terri's head. Either a ring or ribbon is used to form the ponytail.



1154 Terri in Duster and Pony-Tail Hat 14.95

## SPRING SHOWERS

Rain, rain, go away! But we don't mind the sprinkles when we're all dry and warm in our new rain coats. The raindrops splash and the clouds hang low, but soon the sun comes out again and shines on the flowers and trees and makes them grow. We like to walk in the showers in our pretty plastic raincoats that come with rain hats in a whole rainbow of colors! Won't you love having us with you when it pours, dressed in our rain clothes just like you'll be? No need to leave us indoors, because we can be bathed, go swimming, or be caught in the rain and it won't hurt our durable skin! But of course we'd rather be in our new raincoats, if you don't mind, when you take us out in the rain. But when the weather clears up and the skies are blue, I like to wear my Duster and Pony-tail Hat, that you see on the right. Isn't it cute?

1840 Rain Coat and Hat 1.50

2801 Rain Coat and Hat 1.50

1354 Duster and Hat 1.95

11



# Duster Coat with Pony~Tail Hat

Terry Bukowski

Tiny Terri Lee's coat also has three buttons down the bodice of the duster. Tiny Terri is shown in the 1955 Fashion Parade wearing a solid color duster and in the 1956 Fashion Parade a checked fabric. In March 1956 Tiny Terri joins Terri in her duster coat and pony~tail hat.



3354 For cool afternoons, a Duster and Hat with Dress & Panty \$2.19



3154 Tiny Terri in Duster & Hat 5.98  
3130 Tiny Terri in School Dress, Assorted 5.29  
A separate Duster that goes with most everything. Another School Dress, too, because we must have lots of these.  
3354 Duster & Hat 1.49  
3330 School Dresses, Assorted 1.19



1955 TTL Fashion Parade

1956 TTL Fashion Parade

The Fashion Parades and Monthly Magazines help date the fabrics and it appears both the solid and the checked were available from 1954 on.



The pony~tail hat is one of those accessories that is easily lost and Mary Hayden has given you a pattern to make a replacement in this issue.

The  
ways  
the  
with



pony~tail hat came two with a ribbon as seen in 1956 Fashion Parade or a plastic ring which is shown in the May 1955 Monthly Magazine.

# Duster Coat with Pony~Tail Hat

Terry Bukowski



10

1960 Terri Lee Magazine, distributed by Magna Enterprise, Inc. Tiny Terri is wearing her checked duster and hat.

Above January 1957 Monthly Magazine



# Duster Coat with Pony~Tail Hat

Terry Bukowski

An unusual duster fabric can be dated to the Mar-Fan years. Linda Baby is documented wearing a lightweight coat and hat made from the same cotton fabric as seen in the green pony~tail hat.



# *Little Mother Sews a Ponytail Hat for Tiny Terri Lee*

By Mary M. Hayden

Ponytail hats are just so cute and Tiny Terri Lee is adorable in hers. You can find the small rings at your fabric store; look in the curtain and drapery section. They are usually white plastic but you can paint them gold or any color you wish.

## **Materials:**

$\frac{1}{4}$  yard fabric

$\frac{1}{4}$  yard of lining

Pipe cleaner

Small ring for back of hat

Thread

## **Instructions: Sew all seams $\frac{1}{4}$ "**

1. With right sides together, stitch curved edge and opposite edge (front) together.
2. Fold up  $\frac{1}{4}$  inch on remaining edges and press lightly.
3. Cut the pipe cleaner the length of the front less  $\frac{1}{2}$ ".
4. Place the pipe cleaner on the front edge, turn right side out. Remember to keep the folded fabric in place.
5. Stitch the pipe cleaner in place.
6. With the hat lying flat, stitch the folded edges together.
7. Bend the front to fit Tiny Terri Lee's head, add the ring.
8. If desired you can make a small stitch at the back (x) to make the hat more secure.

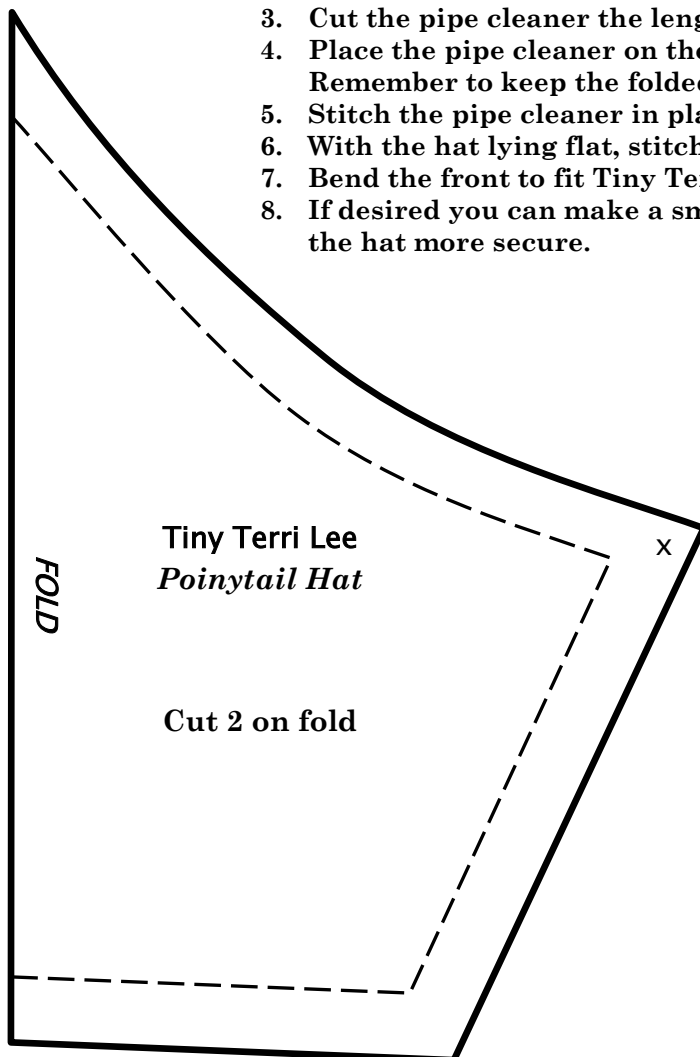


Photo courtesy of Terry Bukowski

## Terri Lee Doll Is Gardena's Sweetest Adopted 'Daughter'

By POLLY WARFIELD

Valley News Staff Writer

Gardena has a new citizen. She's small but, oh my!

She is **Terri Lee**, and for such an innocent looking creature, she has a sophisticated background and impressive list of "firsts" to her credit.

She is the first and, it is claimed, one and only lifetime doll, unconditionally guaranteed. Handed down from mother to daughter, her guarantee goes with her. If injured or disabled, she can be sent to the Terri Lee Doll Hospital at the factory to be repaired at non-profit cost.

She is the first talking doll, so says her manufacturer. Terri has been talking for eight years.

Her makers claim she is the first doll entirely of plastic, first to come out in a brown-skin version, and they believe the first to make an official debut before the British royal family at a London fashion show.

Terri was created 15 years ago in Lincoln, Neb., by a talented mother who used her own daughter as model. With success, **Terri Lee** moved to Apple Valley.

Last June, the **Terri Lee** business was bought by I & S Industries, who then started looking for a suitable expanded production location.

"The Southern California area was surveyed carefully," said Shane Wilder, I & S associate. "We wanted a lot of space and a central location. We found what we were looking for in Gardena, just minutes away from downtown Los Angeles."

**Terri Lee's** new home is at 2134 W. Rosecrans Blvd., where for a limited time, until Christmas, she will be sold to her Gardena neighbors at a "get acquainted" reduced cost.

Her new manufacturer is Ira Murray Sands, originally of Brooklyn, N.Y., whose previous activities have been in electronics, oil and minerals.

He bought **Terri Lee**, not because of any inordinate love for dolls, but because he is an aggressive and astute businessman who looks for industries to take over and build "to his way of liking."

Second in command is Sam Longo, vice president, described as "a boy business genius."

Toys are big business — a multi-million dollars yearly business.

A visit to the new Rosecrans plant, diagonally across the street from Ralph's market, is somewhat like a composite visit to Santa's jolly workshop and a scene of grisly doll disaster.

The big (30,500 square feet) factory is full of bins and boxes of curly-haired heads, dismembered plastic torsos, chubby flesh-tinted arms and legs, wide eyes in all colors. Miniature wig stands hold detached heads of hair, all colors, ready for meticulous styling and setting with wire brush and aluminum curlers.

These dissociated members are brought together in up-to-the-minute assembly line manner and when full production begins at the first of the year, the present hull will be supplanted by quite a hum.

Just now a production let-down is the quiet after the pre-Christmas storm of getting out 40,000 dolls in about two weeks to fill a backlog of orders.

To accomplish this, I & S sent out a call to local high schools for part-time help. This was an successful they will continue the policy.

"We had 45 high school girls on the assembly line, working evenings, Saturdays and Sundays," said Wilder. "Believe me, those girls really backed down. Many of them took the job just to learn about the doll business, and there was no gooding off. They were real conscientious hard workers. But they had a ball."

The difficult we do immediately, it has been said. The impossible takes a little time. I & S has solved a knotty "impossible" problem. Sands

wanted to produce a transistorized talking doll. "Impossible," he was told.

Two days later, he held a transistorized talking **Terri Lee** doll in his hands. She is on the planning board for future production.

To be marketed soon after the first of the year are "mother-daughter" outfits for little girls and their dolls. I & S is dickering with some top-flight fashion designers on this.

Future plans include a series of educational **Terri Lee**

record albums. Present **Terri Lee** records (voiced, incidentally, by the original **Terri Lee**, herself) include some simple arithmetic and English lessons. It is planned to produce a complete educational library of long-playing albums. "We have been getting a lot of inquiries from education boards," said Wilder.

At present, though, Terri is more canary and clothes horse than egghead, and little girls like her that way. Toni Harper

does her singing, on records of course. Terri's voice comes from your record-player, but she has a speaker in her head and the sound seems to come from her.

She has a line of 150 costumes ranging from elite to fabulous. She retails, depending on costume, from around \$12 to \$250. At this pause-giving price she comes in a genuine top-pelt, silver blue mink coat.

"The perfect gift," someone has said, "for a millionaire or a midget."



**BEST DRESSED DOLL** — Charming **Terri Lee** picks out the appropriate dress from her extensive wardrobe. The guaranteed-for-lifetime beauty is a Gardena product, and her clothes may be purchased to fit various-sized

pocketbooks. Should **Terri Lee** have an accident at the hands of some energetic young owner, she can be sent to factory hospital for quick repairs, and come back good as new.

# I & S 1962

By Glenda Kitto

And there is always more to the story.

In our last issue we had located a "Factory Outlet" add from a December 13, 1962 newspaper. Here is more about the story of our Terri Lee and her move to Gardena, CA and the involvement of I & S Industries. As the article states:

...She is the first talking doll so say her manufacturer, Terri has been talking for eight years.

...entirely of plastic, first to come out in a brown-skin version and they believe the first to make an official debut before the British royal family at a London fashion show.

...last June, the Terri Lee business was bought by I & S Industries. ...Her new manufacturer is Ira Murray Sands, originally of Brooklyn, N.Y. ...A new 30,500 Sq FT factory full of bins and boxes of curly haired heads, dismembered plastic torsos and chubby flesh-tinted arms and legs.

...I & S Ind is now in the quiet after the pre-Christmas storm of getting out 40,000 dolls to fill a backlog of orders. To accomplish this local high school girls worked evenings, Saturday and Sundays on the assembly line.

...Future plans include a series of educational Terri Lee record albums. ...At present, Terri is more canary and clothes horse than egghead.

OK Terri Lee Collectors here is something for you all to get your dresses out and look them over. Here are more bodice fabrics designs. The two on the top are made with nylon inserts much like the fabric of some of the confirmation dresses. The bottom two are cotton with eyelet like designs. These dresses come in cotton and/or dotted swiss. So look in your dress closet and see which ones you have and let us know if you have any different ones.

Sue Munsell



# TerriLee® Terri Lee Fabrics

By Wanda Houck

I am forever on the look-out for Fabrics used for Terri Lee clothing and have been used on other dolls too! Most of the non-TL items noted in this article are from the Duchess Doll Company of Jackson Heights, NY. They seem to have been popular in the 1940s – 1950s.

A. **"Days of the Week" print** (MarFan Terri) - shown here done in red, pink, and blue. on some homemade items. Same print, but these were reversed so that the colors are on white and the TL dress is white on black.



B. Fabric for **Terri's redingote cotton** under-dress. Here two outfits (I think factory made for 8" dolls).

Also shown here is the Indian print used for Terri's cotton circle skirt - here use horizontally on a homemade dress for a small chubby doll.



# TerriLee® Terri Lee Fabrics

C. **Little Lady pinafore** print - shown here is a homemade dress and note that this print is **EMBOSSSED!**



D. The very rare **Flocked Valentine and Shamrock** gowns, maybe ninon' (?) with hearts stamped on in red glitter. This was used for the early rare Valentine Ballet, here shown on an old Duchess-type doll.



TERRI LEE

LINCOLN, NEBR.



IRISH LASSIE

VALENTINE BALLET

EASTER SUIT

June 2022

# TerriLee® Terri Lee Fabrics

E. Another Duchess-type doll in gown with odd floral design.

This was used (rarely) for one of Terri's **Flocked Roller-Skating** dresses and the bodice of a Lincoln formal.



F. Another Duchess doll in Terri's **"Hearts and Cupid"** masquerade fabric. I've seen several of these little old dolls around.



# TerriLee® Terri Lee Fabrics

G. This dress was on a Mary Jane when I bought. Notice that the fabric is the 1954 Fashion Parade **Garden Party print** in the - lovely roses on shadow print, which is not nearly so common as the floral print coming after.



H. Here is "**Jack 'n Jill**" ribbon - wide white with RED embroidery - All I've ever seen is the orange on white on yellow taffeta dress bodices.



My findings here included 9 different fabrics and most assuredly there are more. If you recall, at least the long-time convention attendees may recall, Linda Cantwell presented us with a program on dolls with TL fabrics. I for one love to hear about the companion or axillary collections found that extend our collecting of Terri Lee. Please let me know if you have identified more.

By: Wanda Houck

June 2022

# TERRI LEE PEDAL PUSHERS

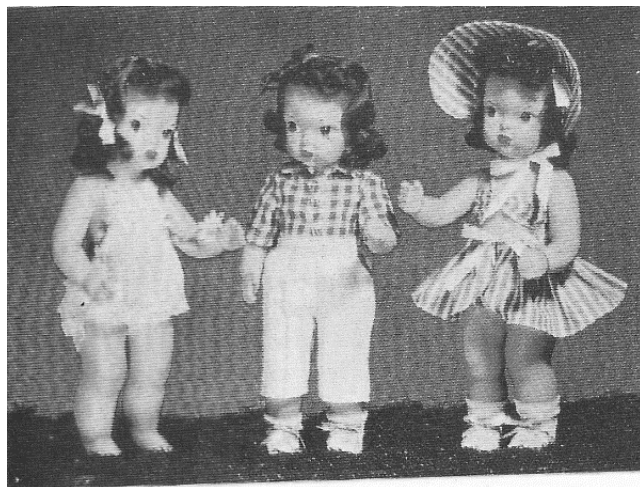
## 1948 - 1951

By Terry Bukowski & Glenda Kitto

“In the Good Old Summer Time...

When Terri Lee was first introduced, Pedal Pushers became an established part of her wardrobe. Advertisements from 1948 in *JR. Magazine*, *The Toy Shelf* and *Terri Lee Fashion Parade* included them. Various names have been attached to this garment whose origin comes from the enthusiasm of cycling. Some of those names include Toreador pants, Golf Togs, Beach Combers and Party pants.

Like all of the clothes for Terri Lee fashions and styles were updated often. The first Pedal Pushers were of cotton and rayon (like the slacks for the Jodhpurs.) In subsequent years Gold Togs and Toreador pants were brought to market. The Party pants of velveteen (also known as Toreador costume) were introduced later with the Tiny Terri Lee.



30A Terri in Sun Suit      20A Terri in Pedal-Pushers      10A Terri in Sarong and Bonnet      Page 13

### IN THE GOOD OLD SUMMER TIME

I love sports that take me out into the sunshine. For bike riding and picnicking, I wear my pedal-pushers. For sun-bathing or even taking a dip in the water, I wear my beautiful sarong. My sun suit is crisp and cool for that long trip home from the beach. Jerri too, has a sun suit that he keeps nice and dry for after swimming.

1035 Sarong and Bonnet only  
1036 Sun Suit only

1046 Pedal-Pushers and Shirt only



**TERRI'S PEDAL PUSHERS** of blue denim, with pockets, and gripper fasteners; **CHECKED COTTON SHIRT**, tailored, with tiny pearl buttons; **BATISTE DRESS-UP PINAFORE** and **PANTIES** trimmed with dainty Val lace and satin ribbons. **Complete, \$4.50, postpaid.**

# TERRI LEE PEDAL PUSHERS

## 1948 - 1951



There is a plethora of colors available for this mix-or-match costume. The JR Magazine indicated blue denim, with pockets and gripper fasteners, a tailored checked cotton shirt with tiny pearl buttons.

Most likely red, tan, gold would be among the missing colors. Pedal Pushers were matched with a variety of

short-sleeved shirts which were borrowed from brother Jerri Lee. Go with shirts tagged with either the loopy style or regular printed tags.



Catalog # 1046 outfit only

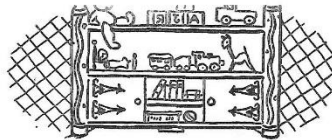
Catalog #20A boxed on doll



# TERRI LEE PEDAL PUSHERS

1948 - 1951

## The TOY



## SHELF



"Oh—hello, playmates! My goodness, I am tired. I have been working in my garden all morning.

"I have fun in my garden. I have planted lots of flowers and vegetables. The flowers will smell nice. The vegetables will be good to eat. I hope they grow very fast.

"Do you like my blue jeans and checked shirt? They belong to my brother Jerri, but he lets me wear them. The jeans have pockets.

"Now I must go into the house and get cleaned up. Mother bathes me and washes my hair with warm water and soap. She is always careful and uses WARM water. Very hot water hurts me. Dolls need the same loving care that little children need.

"After my bath, mother will set my hair in pin curls. She will tie a net around my hair until it dries. Then I will have pretty waves and curls.

"Oh dear. What shall I wear this afternoon? I think I'll put on my new checked gingham dress. It is red and white, with a red satin sash. I will also wear my snuggy wool hand-knit sweater and beret.

"Do you think I'll look nice? Or would YOU dress me differently?"

**TERRI LEE DOLL**—17 inches tall, in blue jeans with waist grippers and pockets; tailored checked shirt.....\$12.25, postpaid

**JEANS AND SHIRT**—(can be ordered separately).....\$ 2.25, postpaid

**TERRI LEE**—dressed in dainty dotted Swiss organdy dress and lace trimmed underclothes (as shown in April).....\$11.95, postpaid

**ORGANDY DRESS**—(can be ordered separately).....\$ 1.95, postpaid

**TERRI LEE**—in pleated jumper skirt of soft wool flannel and white batiste blouse trimmed with Val lace; with plastic raincoat and hat (special combination offer featured in March).....\$13.75, postpaid

**JUMPER SKIRT AND BLOUSE**—(can be ordered separately) \$ 2.50, postpaid

**RAINCOAT AND HAT**—(can be ordered separately)....\$ 1.95, postpaid

Choice of wigs for Terri: Blond, brunette or auburn.

"Here are some of my pretty clothes. A tiny label with my name—TERRI LEE—has been sewn in everything I have.

"My raincoat and hat are made of shiny plastic. I do not get wet in the rain when I wear them. My new checked gingham dress has lace on it, and a red satin sash. It fastens with tiny snaps.

"I am just learning how to swim. My swimming suit has been fashioned of wool jersey. It has 'T' for TERRI, and 'L' for LEE on it. So does my beach coat. My beach coat keeps me warm when I'm wet. When it is very hot, I wear my sun suit. It is made of dainty batiste, and has lace ruffles on it.

"I like my snuggy wool sweater and beret. They are both hand knit. My beret has a fuzzy pom-pom on top. I can button my sweater. It has four little pearl buttons.

"When I go to bed, I wear my lovely nightgown. It is soft and pretty. It has long sleeves and lace and satin ribbons at the neck and wrists. My bed jacket is silk crepe. The bows on my felt bedroom slippers are satin."

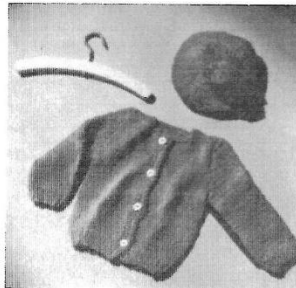
**TERRI'S COMPLETE SUMMER WARDROBE**

—raincoat and hat; cotton play dress; swim suit; beach coat; sun suit; hand knit sweater and beret; nightgown; bed jacket and slippers. A beautifully finished wooden clothes rack lacquered light blue with tiny rosebud decals, and six wee clothes hangers are included in this complete wardrobe. Price, clothes; clothes rack and hangers, complete, only.....\$15.50, postpaid

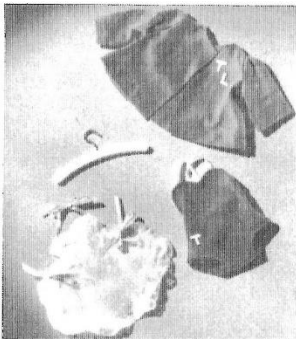
**CLOTHES RACK AND HANGERS**, ordered separately.....\$ 3.25, postpaid

(Hangers pictured are not included in orders for individual garments.)

*Terri Lee's tiny garments are all hand sewn by expert seamstresses. Every garment is not always made up in all colors. We will substitute when out of stock, unless you specify otherwise.*



Hand knitted sweater and beret, made of all wool Fleisher yarn. Round neck, pearl buttons. Royal blue, aqua, or scarlet.....\$3.95, postpaid.



Wool jersey swim suit and beach coat in red, blue or green. White monogram. Sun suit sheer white batiste, lace ruffles, satin ties. Complete, \$2.75, postpaid.



Plastic raincoat and hat, yellow or green. Red and white checked cotton play dress, trimmed in Val lace. Red satin sash. Complete, \$3.75, postpaid.



Fine white batiste nightgown, trimmed in Val lace and satin ribbons. Silk crepe bed jacket, pink or blue. White felt slippers. Complete, \$3.50, postpaid.

Send your toy order to: THE TOY SHELF, 812 North Dearborn St., Chicago 10, Illinois

Please enclose remittance. Same as C. O. D. We will bill you if you prefer.

# TERRI LEE PEDAL PUSHERS

## 1952

By Terry Bukowski & Glenda Kitto

Before we go into detail on the 1952 costumes there needs to be identification of how do you tell if you have a Lincoln Era or Apply Valley Era set of Pedal Pushers. None of the



slacks have tags. It is this authors opinion that all of the Lincoln Era Pedal Pushers have larger grippers AND that the pocket stitching was larger on the Lincoln Era.

The gold set the pocket stitch is set at  $\frac{3}{8}$ " distance between stitching.

The grey set is set at  $\frac{7}{8}$ " between pocket trim stitching.

This appears to be the only real differences: size of grippers snaps and width between trim stitch.

The July 1952 Monthly Booklet gives us some insight as to how Terri wore her shirts on the outside. These were also noted as being used when she golfed.



# TERRI LEE PEDAL PUSHERS

1952

# GOLF

By Terry Bukowski



The 1952 *Fashion Parade* has updated their clothing to the California climate. Golf is becoming popular and Terri Lee needed to join the excitement of playing golf. The *Fashion Parade* section showing the golf outfit is titled Summer Playtime and states "When I go golfing or bicycling. I wear pedal pushers" the outfit comes with a golf club. This same picture is on the back cover of the July 1952 monthly magazine cover. Pedal Pushers & Shirt #3520C was sold as costume only for \$1.95.



520C Terri in Pedal Pushers  
520D Terri in Shorts and Shirt

520G Terri in Sarong and Bonnet  
510C Terri in Sun Suit

## SUMMER PLAYTIME

Summertime is the time for playing outdoors, and Mother made some wonderful clothes for just about every kind of playtime. When I go golfing or bicycling, I wear pedal pushers, and for tennis, I wear tennis shorts and a sport shirt. I have a sarong, too, with a wide bonnet to match. It's wonderfully cool on hot days. Mother encourages me to get plenty of sunshine, because she says it's very good for little girls, and whenever I go outside for a sun tan, I wear my sun suit. Jerri has a nice sun suit, too.

3520C Pedal Pushers and Shirt  
3520D Shorts and Shirt

3520G Sarong and Bonnet  
3510C Sun Suit

15



— 12 —

# TERRI LEE PEDAL PUSHERS - GOLF

1954 - 1955 - 1956

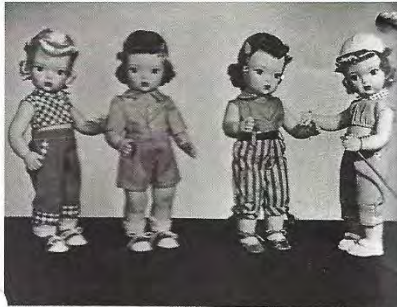
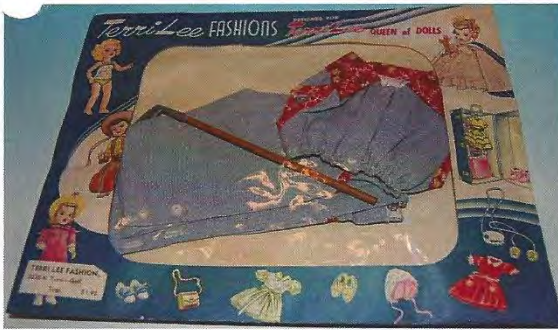
By Terry Bukowski & Glenda Kitto

In 1954 Terri's golf outfit gets a makeover. The top is short and has elastic at the midriff.

The collar and sleeves are of a contrasting fabric. The pants snap at the side the pockets

and have the same contracting fabric which ties the pants to the shirt. At the bottom of the pants are two buttons or white headed snaps. This is the outfit that Terri will golf in until the company goes out of business. The 1954 *Fashion Parade* states "When I go golfing, I wear the Golf Togs. They're denim and they button on the side of the pants, as you can see. A little golf club and a white molded cap complete my outfit when I'm dressed." In 1954 a white molded cap is added. In 1954 the stock number is

3520K and the advertisements shows the red dot trim or the red flowers as seen in the package and on the doll.. The mint in package outfit has the new stock number.



520C Terri in  
Pedal Pushers  
with cuffs, no  
match blouse 12.95

520B Terri in  
Tennis Shorts and  
Skirt 12.95

520E Terri in  
Tennis Pants  
and Skirt 12.95

520K Terri in  
Golf Togs with  
Golf Club and  
Hat 12.95

## SPORTS OUTFITS

Here are four of my special outfits you're going to love! The first is my new Pedal Pusher costume, with the pretty blouse and trim on the turn-up cuffs. I love to go bike riding in this! Next is the Tennis outfit I wear when I play tennis. Then there's my beautiful Tendorator get, with the colorful pants that tie at the cuffs, and the metallic-fringed collar on the blouse. It comes with its own belt. And finally, when I go golfing, I wear the Golf Togs on the right. They're denim and they button on the side of the pants, as you can see. A little golf club and a white molded cap complete my outfit when I'm dressed. Take me outdoors to all your activities with you!

520C Model  
Pedal Pushers of sturdy  
knitwear 1.95

520B Model  
Tennis Shorts and Skirt,  
denim with  
elasticated sides  
and tops 1.95

520E Tendorator  
Pants and Skirt  
with elasticated  
metallic trim 1.95

520K Golf Togs  
of Denim with  
Golf Club 1.95



Different print fabric than what is normally seen



# TERRI LEE PEDAL PUSHERS - GOLF

## 1954 - 1955 - 1956

Terri in a golf togs is next to Terri in Toreador Pants. I have a golf tog with the toreador trim as well as the red dot trim.

You can order costumes from Your store by mail !!



PLEASE SEND ME

CAMPFIRE GIRL COSTUME (DRESS) \$2.95	NAME _____
BLUE BIRD COSTUME (DRESS) \$2.95	ADDRESS _____
COST OF PLAY PEN (NAME) \$3.95	CITY _____ STATE _____
COST OF BABY LINDA (NAME) IN CLOTHES \$3.95	ENCLOSED (\$ _____) THANK YOU.
LINDA IN A DRESS \$4.95	(FOR NAME TO SEND COST THE MAIL AND POSTAGE)
GARDEN PARTY COSTUME \$5.95	



# TERRI LEE PEDAL PUSHERS - GOLF

## 1954 - 1955 - 1956

In 1956 Terri Lee is wearing green golf togs with a pink and green trim. You have to look close at the picture to see it.



1114 Terri in Pedal Pushers and Blouse 12.95  
1115 Terri in Tennis Set 12.95  
1117 Terri in Toreador Set 12.95

### SPORTS OUTFITS

Here are four of my special outfits you're going to love! My brand-new Pedal Pusher Costume is first, with its blouse of sports print and ruffles for sleeves, and the little eyelets with laces at the calves of the legs. My Little Mother says these details are interesting. My Tennis outfit is just made for free action on the court; while the Toreador Outfit is designed to look beautiful in at home. Who doesn't like to lounge at home in colorful velveteen Toreador Pants such as these shown in the picture, trimmed with lace and topped with a fine sheer blouse also lace-trimmed? I know I do! And when I go golfing, I wear my Golf Togs on the right. They're denim and they button on the side of the pants, as you can see. A little golf club and a white molded cap complete my outfit when I'm dressed. Take me with you to all your outdoor activities!

1314 Pedal Pushers and Blouse 1.95  
1315 Tennis Set 1.95  
1317 Toreador Set 1.95  
1902 Golf Togs of Denim with Golf Club 1.95

17



Here is Terri and Jerri's first golf lesson. Each doll has their golf club and are listening to every word on how to hit a ball. Not sure Jerri is going to do well playing golf wearing his cowboy outfit.



# TERRI LEE PEDAL PUSHERS

1954 - 1955 - 1956

By Terry Bukowski & Glenda Kitto

1953 -1954 saw a major expansion in the line-up of Pedal Pushers. New crop topped sleeveless pedal pushers, Toreador pants with contrasting sleeveless shirt and the new golf togs with a gold club and hat.



Monthly Booklet August 1953

1953 Slacks with turned up cuffs with a contrasting material to match the top.

Catalog # 3520C in sturdy broadcloth

Catalog # 520C outfit on boxed doll

Toreador Pants with colorful print pants that tie at the calf and a metallic fringed collar on blouse.

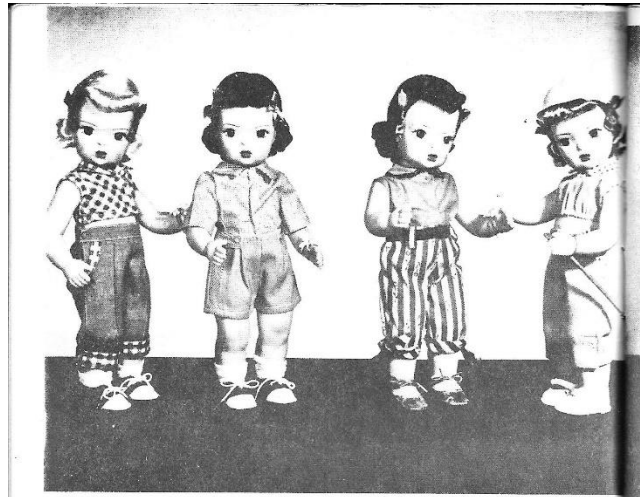
Catalog # 3520L Pants, Shirt & Belt

Catalog # 520L outfit on boxed doll

Golf togs in denim with button on side of pants, matching shirt, a golf club and white molded cap

Catalog # 3520K outfit only

Catalog # 520K outfit on boxed doll



520C Terri in Pedal Pushers with cuffs, to match blouse 12.95

520D Terri in Tennis Shorts and Shirt 12.95

520L Terri in Toreador Pants and Shirt 12.95

520K Terri in Golf Togs with Golf Club and Hat 12.95

## SPORTS OUTFITS

Here are four of my special outfits you're going to love! The first is my new Pedal Pusher costume, with the pretty blouse and trim on the turn-up cuffs. I love to go bike riding in this! Next is the Tennis outfit I wear when I play tennis. Then there's my beautiful Toreador set, with the colorful pants that tie at the calf, and the metallic-fringed collar on the blouse. It comes with its own belt. And finally, when I go golfing, I wear the Golf Togs on the right. They're denim and they button on the side of the pants, as you can see. A little golf club and a white molded cap complete my outfit when I'm dressed. Take me outdoors to all your activities with you!

3520C Pedal Pushers of sturdy broadcloth 1.95

3520D Tennis Shorts and Shirt, denim with checked shirt and trim 1.95

3520L Toreador Pants and Shirt with plastic belt, metallic trim 1.95

3520K Golf Togs of Denim with Golf Club 1.95

16

1954 Apple Valley Catalog

# TERRI LEE PEDAL PUSHERS

## 1954 - 1955 - 1956



Fashion Wardrobe



Playtime  
Jun 2022

# TERRI LEE PEDAL PUSHERS

1954 - 1955 - 1956



## Wardrobe Dolls are Favorite Playmates

**A - Fashion Plate Walking Doll with a Trunk Full of Clothes.** Big 19-inch glamour doll has everything she'll need in her large 20-inch trunk. Her thick hair is firmly rooted in her lifelike, soft vinyl head so you can shampoo and set it. She walks with you, turning her head as she steps. Sparkling eyes close to show her long lashes. She's wearing her taffeta and nylon net evening dress, taffeta slip, shoes and socks. Outfit includes: coat with contrast lapels and cuffs, handbag, striped school dress, velvet pants and white blouse for TV lounging, nylon nightie, strapless sundress, sun glasses and scarf, extra shoes and socks. C-10T 172. Doll & Outfit.....13.98

**B - Little Susan Stroller with a Wardrobe Trunk of Clothes.** Save \$1...same quality was \$9.98 last year! Lovable Susan is 13½ in. tall...walks when you lead her by the hand, turns her head and flirts with every step. Her thick hair is firmly rooted, you can shampoo, set it, comb and brush it. Hard-to-break plastic body with lifelike vinyl head. Go-to-sleep eyes have long lashes. She wears a taffeta dress, jacket, brim hat, panties, shoes, socks. Her wardrobe, packed in a luggage style trunk, includes: pajamas, housecoat and bedroom slippers, raincoat, hood and boots, and an embossed taffeta evening gown. C-10T 142. Doll & Outfit.....8.98

**C - Janet Can Walk, Kneel, Stand, Sit Alone.** She's 25-inches Tall. She can do anything dolls selling for \$15 and up can do, because she's fully jointed...even her knees and arms! She's almost as tall as her little mother...a wonderful playmate! She'll kneel with you when you say your prayers, sit while you read her a bedtime story, walk when you lead her by the hand...turning her head with each step. Beautifully made of hard-to-break plastic. Her thick, lustrous hair is firmly rooted so you can comb, brush, shampoo and set it. She's wearing a crisp, embossed cotton print dress that's washable, slip, panties, shoes and socks. C-10T 174. 25-inch Janet.....9.98



Her knees bend so she can sit and kneel!



### Terri Lee has a Wardrobe styled Just for Her

- Brown eyed little sweetheart is so lifelike she almost speaks!
- Her "Raysheen" hair can be combed, brushed, shampooed and set
- Included: membership in Terri-Lee club and monthly magazine

**D - Brown Eyed Terri Lee Doll...** modeled after a real two-year old child and hand painted with amazing realism! Her head turns, her arms and legs move, her lifelike hair will even take a permanent wave. Of hard-to-break plastic. Terri wears a flaring slip, can-can panties, shoes and socks. She has a detachable hair bow and daisy wrist corsage. Plan her outfit from the costumes shown. C-10T 144. 17-inch Terri Lee.....11.95

**E - TV Lounge Set with Robe, Pajamas and Slippers.** Clever jester style pajamas have a contrast solid color ruff at neck and pom-poms at front. Felt slippers trimmed in matching pom-poms. Complete with solid color cluster of quilted taffeta. C-10T 145. 4-piece lounging set.....3.95

**F - Brownie Dress and Beanie.** Just the right outfit for Terri Lee when her little mother takes her on picnics and camping outings. Brown denim dress has gripper snap closing, belt to match. Carefully tailored throughout. Felt beanie to match. C-10T 149. Brownie Dress and Beanie Set.....2.95

**G - Denim Pedal Pushers and Sport Shirt Set.** Gay Pink cotton print shirt is sleeveless. Shirt collar matches pants...cuffs on pants match the shirt. A wonderful play costume for Terri Lee. C-10T 193. Pedal Pushers and Shirt Set.....1.95

**H - Set of 3 Cotton Dresses.** A whole wardrobe of dresses for Terri Lee...one with a matching purse for Sunday Best. All are beautifully detailed in crisp washable cotton. Back closings. C-10T 147. Set of 3 Dresses.....3.00

1955 Jewel Tea Christmas

3

1955 Jewel Tea Christmas Catalog

# TERRI LEE PEDAL PUSHERS

## 1954 - 1955 - 1956



# Toreador Set

Terry Bukowski – Feb 2014



In the May 2007 issue of the *Daisy Chain*, Glenda did a wonderful article on Capri's. The vast array of colors made the Capri Outfit a big hit. In the May 1954 Monthly Magazine, the Capri outfit gets a name change to Toreador pants and blouse for \$1.95 but remains the same 1954 outfit. It's not until the 1956 Apple Valley Fashion Parade does the Capri outfit get a fashion redo. The pants are now made of velveteen in beautiful colors and come with an organdy sheer blouse which is trimmed with lace; the

price for the outfit remains the same at \$1.95. Notice the lace sewn into the sides of the pants. The 1956 AV FP shows both Terri and Tiny Terri Lee wearing silver ballet slippers. Several of my dolls which are MIB were wearing the oil cloth and the Cinderella shoes, so I don't think it matters all three styles look great!



Dennis Ross Collection



# Toreador Set

Velveteen was not the only fabric used; TTL has pants made of corduroy and it is just as elegant as the velveteen. While I like the pants in corduroy I can't help but wonder if this was a deliberate fabric choice or did the factory run out of velveteen? Where there Terri Lee corduroy toreador sets made?



Dennis Ross Collection

# The 50's Look...Toreador Pants

By Glenda Kitto



Pedal Pushes...slacks that extend to about midpoint of calf, worn by girls and women, originally used when cycling. Random House 2<sup>nd</sup> Ed. Dictionary

The Toreador Pants were light weight cotton prints. At waist are belt loops for a vinyl belt. Dot grippers at waist, plus the pants were slightly gathered on elastic across the back. At pants hem, a bias-cut sash ties into a bow. The companion tops were a solid color with a Peter Pan collar trimmed in gold braid or another decoration. All of the tops were sleeveless.

Catalog # 3520L (54) \$1.95

Doll dressed # 520L with metallic slippers \$12.95



There are three different prints used to make the Toreador pants.

Daisy Chain Print



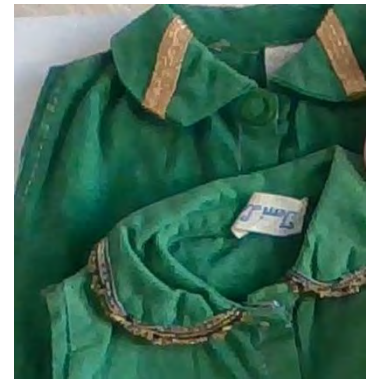
Dutch Print



Floral Stripe Print



Sleeveless tops, Peter Pan collars, center front opening with 2 sq snaps and are all solid with braid trim in black or gold metallic.





Gathering all the toreadors was like herding cats. Some were playing in the dirt while others were dressing for play and one ready for date-night. The dolls were having so much fun romping around they just did not want to line up for the official photo. A simple yet glamorous costume.

A costume that be dressed down with Cinderella shoes or matched with metallic slippers.



# TERRI LEE PEDAL PUSHERS

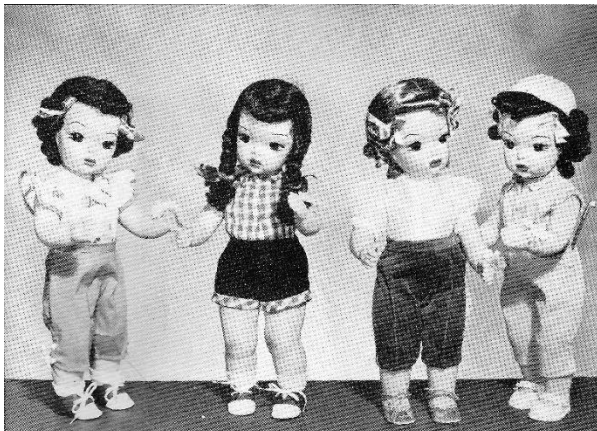
1956

By Terry Bukowski & Glenda Kitto

Another fancy Pedal Pusher outfit comes with a ruffled cap sleeve and most often in pastel colors. Blouse is a sport print with ruffles for sleeves and little eyelets with laces at the calves at the legs.

Catalog # 1314 Slacks with sports print blouse

Catalog # 1114 Dressed doll in box



1114 Terri in Pedal Pushers and Blouse 12.95  
1115 Terri in Tennis Set 12.95  
1117 Terri in Toreador Set 12.95

## SPORTS OUTFITS

Here are four of my special outfits you're going to love! My brand-new Pedal Pusher Costume is first, with its blouse of sports print and ruffles for sleeves, and the little eyelets with laces at the calves of the legs. My Little Mother says these details are interesting. My Tennis outfit is just made for free action on the court; while the Toreador Outfit is designed to look beautiful in at home. Who doesn't like to lounge at home in colorful velveteen Toreador Pants such as these shown in the picture, trimmed with lace and topped with a fine sheer blouse also lace-trimmed? I know I do! And when I go golfing, I wear my Golf Togs on the right. They're denim and they button on the side of the pants, as you can see. A little golf club and a white molded cap complete my outfit when I'm dressed. Take me with you to all your outdoor activities!

1314 Pedal Pushers and Blouse 1.95  
1315 Tennis Set 1.95  
1317 Toreador Set 1.95  
1902 Golf Togs of Denim with Golf Club 1.95

17



Fashion Wardrobe



Playtime  
Mar 2022

# TINY TERRI LEE PEDAL PUSHERS

## 1955 -1956

By Terry Bukowski & Glenda Kitto



3322 For bicycling, Pedal Pushers and Shirt 98¢  
3321 Dress for town in matching panty 98¢

3323 For sportswear, Dress & Panty 98¢  
3325 For lounging at home, Toreador 98¢

1955 saw the introduction of Tiny Terri Lee. And, like her big sister the wardrobe was extensive. Her bicycling and velveteen Toreador sets were some of her first play outfits. In 1956 another fancy Pedal Pusher outfit was introduced with a ruffled cap sleeve and most often in pastel colors just like big sister Terri.

Blouse is a sport print with ruffles for sleeves and little eyelets

with laces at the calves at the legs.

1955 Catalog # 3322 Slacks with contrasting matching blouse \$.98

1955 catalog 3122 doll dressed in contrasting set \$4.48

1955 Catalog # 3325 Toreador velveteen set with organdy blouse \$.98

1955 Catalog # 3125 doll dressed in Toreador velveteen set with organdy blouse \$4.48



3114 Tiny Terri in Pedal Pushers 4.49  
Ready for a spin on my bike, or perhaps a game of tennis.  
3314 Pedal Pushers .98

3115 Tiny Terri in Tennis Set 4.49  
3315 Tennis Set .98

1956 Catalog # 3314 Pedal Pusher with sports print blouse \$1.49

1956 Catalog # 3114 Doll dressed in Pedal Pushers with sports print blouse \$ 4.98

1956 Catalog # 3317 Velveteen Toreador set \$ 1.49

1956 Catalog # 3117 Doll Dressed in Velveteen set \$4.98

# TINY TERRI LEE PEDAL PUSHERS

## 1955 -1956



Fashion Wardrobe

Playtime  
Mar 2022



## FOR SALE – Terri Lee Clothing

Call Wanda Houck, (405) 340-3958, [wanda.houck@sbcglobal.net](mailto:wanda.houck@sbcglobal.net)

Terri Lee needs bows! ....and I need to share my old ribbon stash!

One bag contains 25-plus pairs of bows, all colors and all vintage ribbon (NOT new, Terri doesn't like polyester). Also included are lengths of ribbon for tying onto braid ends, and around MarFan heads. Also, there's a length of narrow pink enough to make 3 pairs of tiny Terri bows. \$15 includes mailing.

Vintage ribbon for Terri Lee oilcloth shoes - white single face rayon, 1/4" wide. Two 12" lengths \$5 includes mailing.

Felt purses for Tiny Terri - I made these for the 2011 convention in Kansas City. I had these left over. Tiny looks so cute with one of these over her shoulder! \$7 includes mailing.

